

# License Registration Procedure

Once the program has started, you need to register your license in order to start working.

- 1) Open Pegasus CAD-CAM
- 2) Fill in the form that appears automatically (the sections in bold are mandatory fields)

**To use the program, a registration is required.**  
Registration is required to validate the dongle usage bound to this specific PC.  
When registered, the user will be able to ask support and to receive updates and special offers.

**Personal Data**

**Name**

**Surname**

**Company**

**Address**

**CAP/Zip Code**

**City**

**Province**

**Country** Italy

**Contacts**

**Telephone**

Fax

**E-Mail**

Site (www)

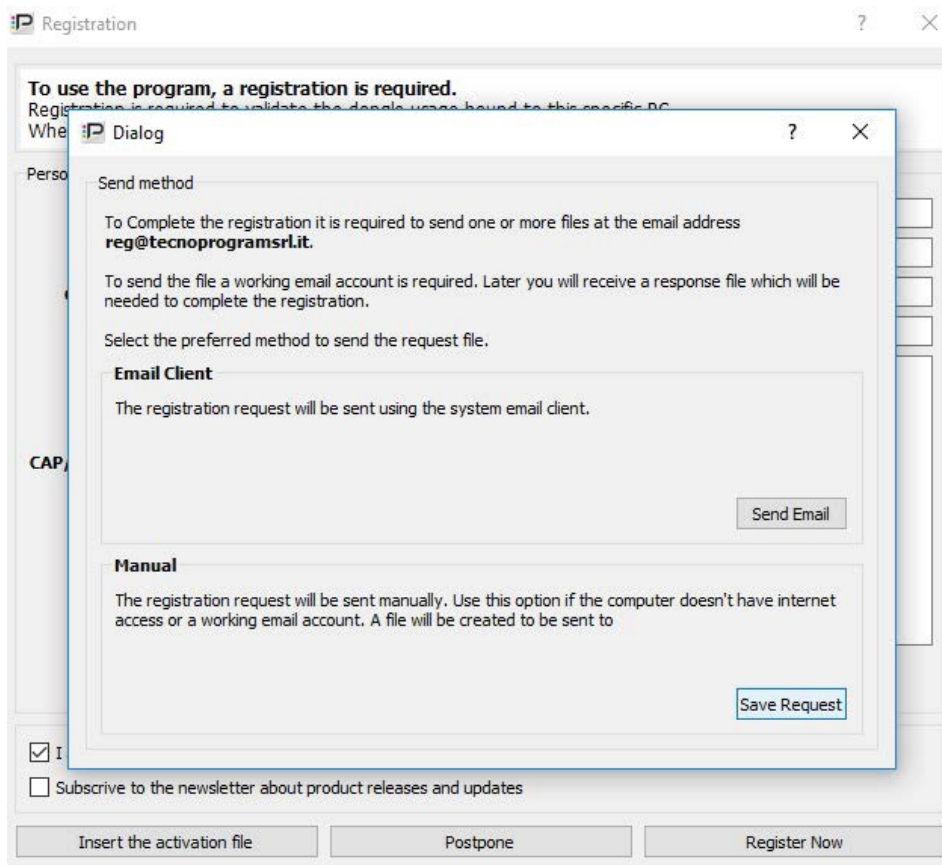
Notes

I accept the privacy policy [Read the privacy policy](#)

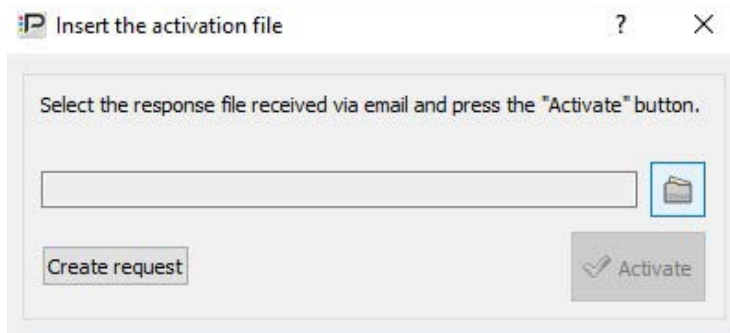
Subscribe to the newsletter about product releases and updates

3) Accept the conditions on the processing of personal data and click on **Register now**

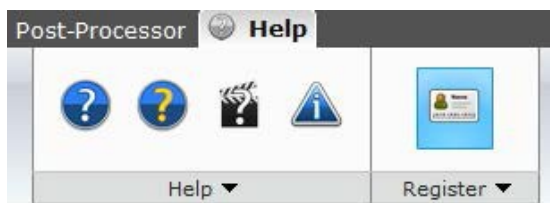
4) Save the request file on your desktop using the **Save Request** button and send it to [reg@tecnoprogramsrl.it](mailto:reg@tecnoprogramsrl.it)



5) After receiving our activation file, upload it with the **Activate** button.



**Note:** In the event that the registration form is closed without registering, it is possible to reopen it at a later time using the **Help** command and selecting the **Registration** item



Click on **Create request** and carry out the above steps **2-3-4-5**.